



# Aliana

## Saratoga

From the \$340's

17903 Luminaire Ln  
 Richmond, TX 77407  
**Phone:** (281)207-6450  
**Fax:** (281)207-6451

### Sales office hours:

Tues - Sat: 10 am - 7 pm  
 Sun - Mon: Noon - 7 pm



Joanne DeCarlo



Darrell Hooper

### Driving Directions

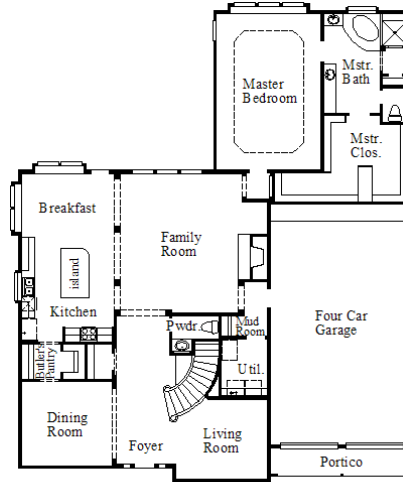
#### From 59 South:

Beltway 8 North,  
 Exit Westpark Tollway West,  
 Exit FM 1464,  
 Left on 1464,  
 Left on West Airport  
 Left on Andover Dr.  
 Right on Luminaire Ln.

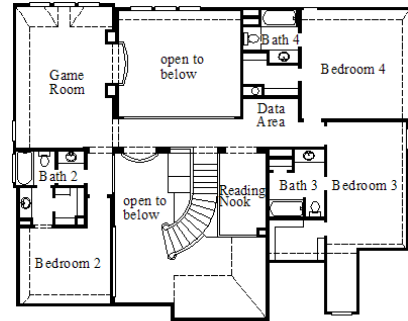
~Sq. Ft.: 4036  
**Stories:** 2.0  
**Bedrooms:** 4  
**Master:** Down

**Baths (f/h):** 4/1  
**Garage:** 4.0  
**Price:** \$396,990

## 7288 / Design 7288



First Floor



Second Floor

### Available Elevations



Elevation A



Elevation B



Elevation C



Elevation D



#### Disclaimers, Terms and Conditions of Use.

Plans, specifications, community amenities, standard features, availability and prices are subject to change without notice. Calculations for square footage of these plans were made from exterior dimensions less attached garage, if appropriate. A/C square footage is the same area less thickness of exterior walls of the same area. Square footage calculations are made based on plan dimensions only and may vary from finished square footage of the home as built. The accuracy of property tax rates, homeowners' association fees, and school district information displayed on this web site is not guaranteed by MHI or any affiliated companies. This information has been provided by third parties and is subject to change without notice. It is recommended that you ascertain the correct property tax rates, homeowners' association fees, and school district information from the appropriate authorities before you make a decision to purchase. © 2006 - 2012 Coventry Homes, All Rights Reserved. 5/17/2012



Elevation E

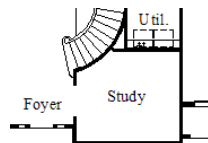


Elevation F

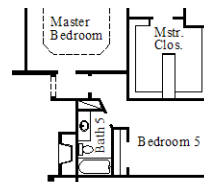


Elevation G

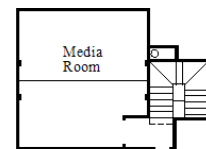
### Available Options



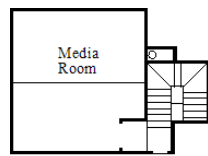
Optional Study  
(# 005)



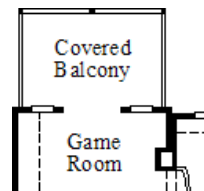
Optional Bedroom 5 with Bath 5  
(# 046)



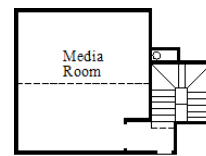
Optional Third Floor Media Room with Lugs and Lights  
(# 1324)



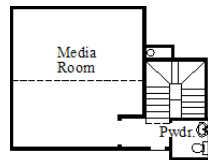
Optional Third Floor Media Room with Step  
(# 1325)



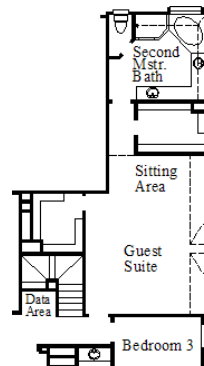
Optional Covered Balcony  
(# 162)



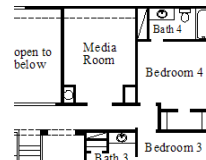
Optional Media Room  
(# 1783)



Optional Third Floor Media Room with Powder Room  
(# 1784)



Optional Second Floor Guest Suite with Stairs  
(# 2189)

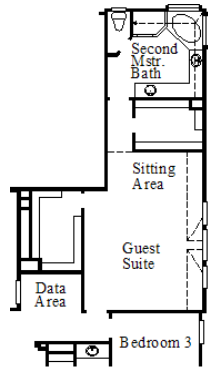


Optional Media Room  
(# 276)

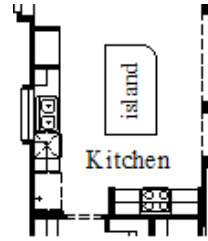


#### Disclaimers, Terms and Conditions of Use.

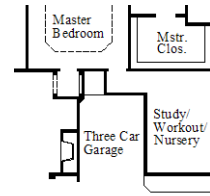
Plans, specifications, community amenities, standard features, availability and prices are subject to change without notice. Calculations for square footage of these plans were made from exterior dimensions less attached garage, if appropriate. A/C square footage is the same area less thickness of exterior walls of the same area. Square footage calculations are made based on plan dimensions only and may vary from finished square footage of the home as built. The accuracy of property tax rates, homeowners' association fees, and school district information displayed on this web site is not guaranteed by MHI or any affiliated companies. This information has been provided by third parties and is subject to change without notice. It is recommended that you ascertain the correct property tax rates, homeowners' association fees, and school district information from the appropriate authorities before you make a decision to purchase. © 2006 - 2012 Coventry Homes, All Rights Reserved. 5/17/2012



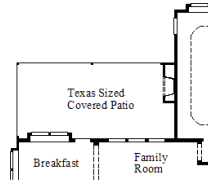
Optional  
Second Floor Guest Suite  
(# 294)



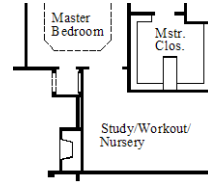
Optional  
Alternate Kitchen  
(# 334)



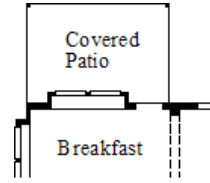
Optional Three Car Garage  
with Study/Workout/Nursery  
(# 467)



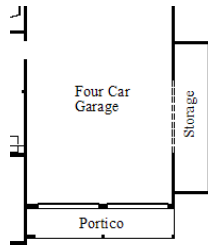
Optional Texas Sized Covered Patio  
with Outdoor Fireplace  
(# 498)



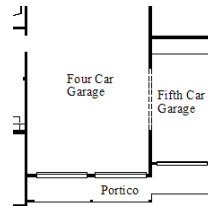
Optional  
Study/Workout/Nursery  
(# 526)



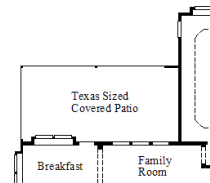
Optional  
Covered Patio  
(# 621)



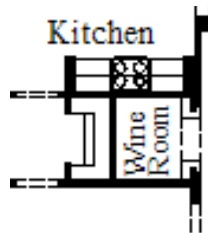
Optional  
5' Garage Extension  
(# 750)



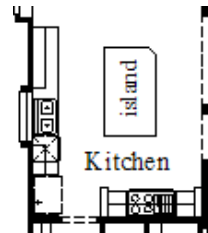
Optional  
Fifth Car Garage  
(# 757)



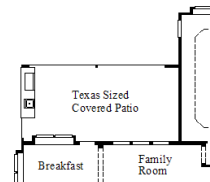
Optional  
Texas Sized Covered Patio  
(# 763)



Optional  
Wine Room  
(# 776)



Optional  
Brick Alcove  
(# 833)



Optional Texas Covered Patio  
with Outdoor Kitchen  
(# 970)



**Disclaimers, Terms and Conditions of Use.**

Plans, specifications, community amenities, standard features, availability and prices are subject to change without notice. Calculations for square footage of these plans were made from exterior dimensions less attached garage, if appropriate. A/C square footage is the same area less thickness of exterior walls of the same area. Square footage calculations are made based on plan dimensions only and may vary from finished square footage of the home as built. The accuracy of property tax rates, homeowners' association fees, and school district information displayed on this web site is not guaranteed by MHI or any affiliated companies. This information has been provided by third parties and is subject to change without notice. It is recommended that you ascertain the correct property tax rates, homeowners' association fees, and school district information from the appropriate authorities before you make a decision to purchase. © 2006 - 2012 Coventry Homes, All Rights Reserved. 5/17/2012