



## Cypress Creek Lakes

From the \$340's

26318 Sunny Springs Ln  
Cypress, TX 77433

Phone: (281)373-0089

Fax: (281)256-2493

### Sales office hours:

Tues - Sat: 10 am - 7 pm

Sun - Mon: Noon - 7 pm



La Tanya D.  
Walker



David Gorman

### Driving Directions

#### From US 290 West:

Left on Cypress-Rosehill/Fry Rd.,

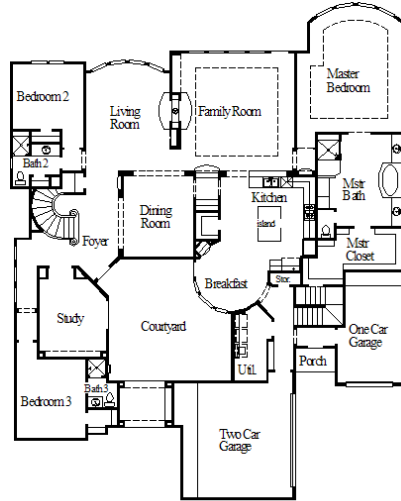
Travel 1 mile,

Left on Sunny Springs Ln.

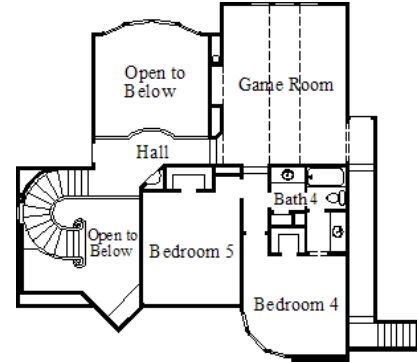
~Sq. Ft.: 4787  
Stories: 2.0  
Bedrooms: 5  
Master: Down

Baths (f/h): 4/0  
Garage: 3.0  
Price: \$451,990

## 8264 / Design 8264



First Floor



Second Floor

### Available Elevations



Elevation A



Elevation B



Elevation D



Elevation E



Elevation F



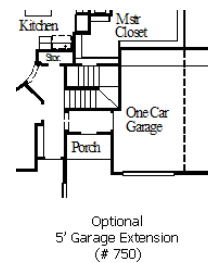
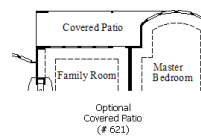
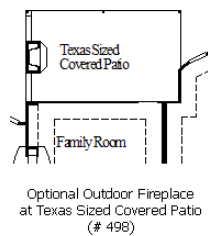
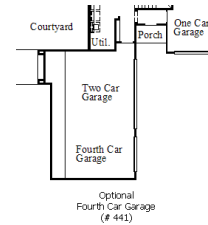
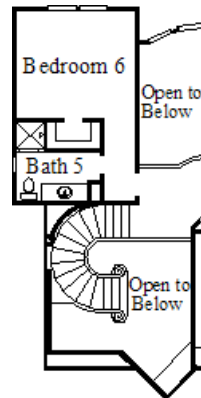
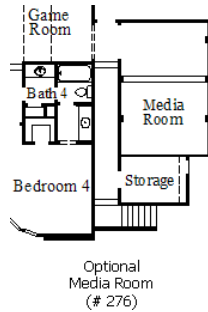
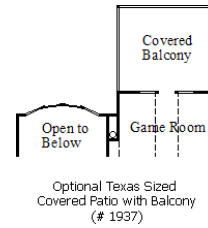
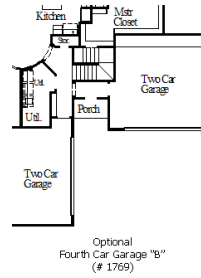
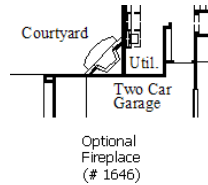
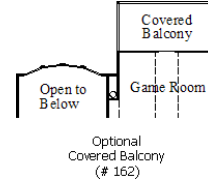
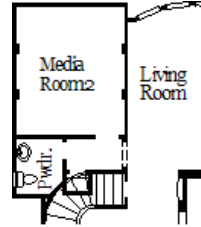
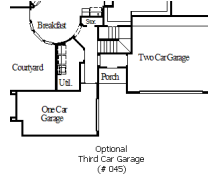
Elevation G



#### Disclaimers, Terms and Conditions of Use.

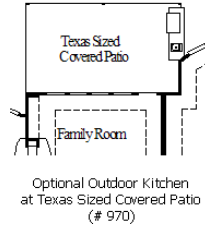
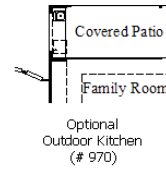
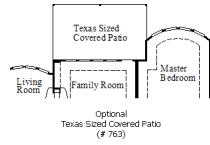
Plans, specifications, community amenities, standard features, availability and prices are subject to change without notice. Calculations for square footage of these plans were made from exterior dimensions less attached garage, if appropriate. A/C square footage is the same area less thickness of exterior walls of the same area. Square footage calculations are made based on plan dimensions only and may vary from finished square footage of the home as built. The accuracy of property tax rates, homeowners' association fees, and school district information displayed on this web site is not guaranteed by MHI or any affiliated companies. This information has been provided by third parties and is subject to change without notice. It is recommended that you ascertain the correct property tax rates, homeowners' association fees, and school district information from the appropriate authorities before you make a decision to purchase. © 2006 - 2012 Coventry Homes, All Rights Reserved. 5/21/2012

## Available Options



### Disclaimers, Terms and Conditions of Use.

Plans, specifications, community amenities, standard features, availability and prices are subject to change without notice. Calculations for square footage of these plans were made from exterior dimensions less attached garage, if appropriate. A/C square footage is the same area less thickness of exterior walls of the same area. Square footage calculations are made based on plan dimensions only and may vary from finished square footage of the home as built. The accuracy of property tax rates, homeowners' association fees, and school district information displayed on this web site is not guaranteed by MHI or any affiliated companies. This information has been provided by third parties and is subject to change without notice. It is recommended that you ascertain the correct property tax rates, homeowners' association fees, and school district information from the appropriate authorities before you make a decision to purchase. © 2006 - 2012 Coventry Homes, All Rights Reserved. 5/21/2012



**Disclaimers, Terms and Conditions of Use.**

Plans, specifications, community amenities, standard features, availability and prices are subject to change without notice. Calculations for square footage of these plans were made from exterior dimensions less attached garage, if appropriate. A/C square footage is the same area less thickness of exterior walls of the same area. Square footage calculations are made based on plan dimensions only and may vary from finished square footage of the home as built. The accuracy of property tax rates, homeowners' association fees, and school district information displayed on this web site is not guaranteed by MHI or any affiliated companies. This information has been provided by third parties and is subject to change without notice. It is recommended that you ascertain the correct property tax rates, homeowners' association fees, and school district information from the appropriate authorities before you make a decision to purchase. © 2006 - 2012 Coventry Homes, All Rights Reserved. 5/21/2012