



Fulshear Creek Crossing

80' Homesites

From the \$260's

5503 Lake Hill Farm Way
Fulshear, TX 77441

Phone: (281)346-2701

Fax: (281)346-1685

Sales office hours:

Tues - Sat: 9 am - 6 pm

Sun - Mon: Noon - 6 pm



Logan Fuzetti

Driving Directions

From I-10 West:

Exit Pin Oak Rd.

& stay on Feeder Rd.,

Left on 1463 and travel 4.5 miles

Right on 1093 and travel 3 miles,

Left on Lake Hill Farm Way

From West Park Tollway:

Head West until it turns

into FM 1093,

Continue on FM 1093 to Fulshear;

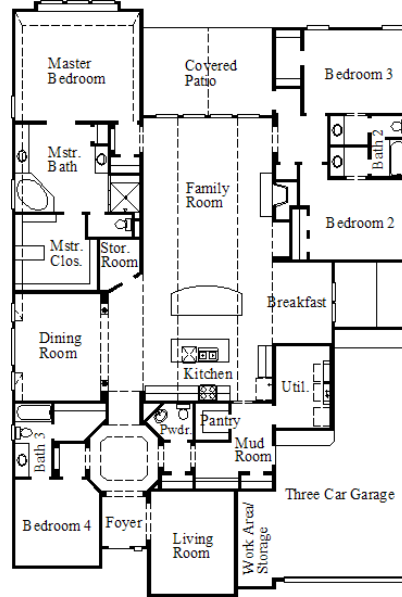
Go South/Left on Lake Hill Farm Way

(behind the Police Station/City Hall)

~Sq. Ft.: 3273
Stories: 1.0
Bedrooms: 4
Master: Down

Baths (f/h): 3/1
Garage: 3.0
Price: \$318,990

6859 / Design 6859



Available Elevations



Elevation B



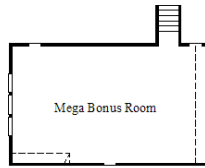
Elevation D

Available Options

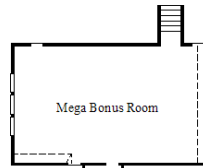


Disclaimers, Terms and Conditions of Use.

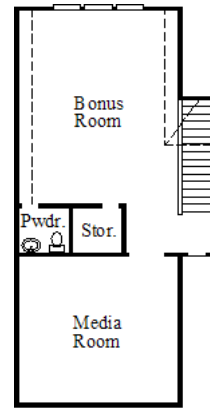
Plans, specifications, community amenities, standard features, availability and prices are subject to change without notice. Calculations for square footage of these plans were made from exterior dimensions less attached garage, if appropriate. A/C square footage is the same area less thickness of exterior walls of the same area. Square footage calculations are made based on plan dimensions only and may vary from finished square footage of the home as built. The accuracy of property tax rates, homeowners' association fees, and school district information displayed on this web site is not guaranteed by MHI or any affiliated companies. This information has been provided by third parties and is subject to change without notice. It is recommended that you ascertain the correct property tax rates, homeowners' association fees, and school district information from the appropriate authorities before you make a decision to purchase. © 2006 - 2012 Coventry Homes, All Rights Reserved. 2/7/2012



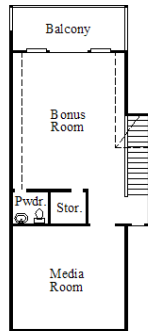
Optional
Mega Bonus Room
(# 1435)



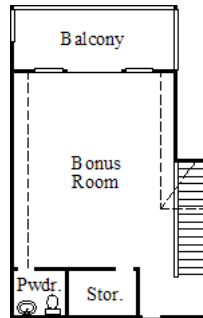
Optional Mega Bonus Room
with Powder
(# 1436)



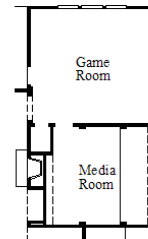
Optional Bonus Room with
Powder and Media Room
(# 1666)



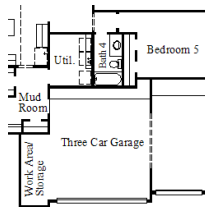
Optional Bonus Room with
Powder and Media Room and Balcony
(# 1917)



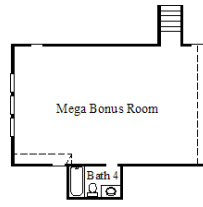
Optional Bonus Room with
Powder and Balcony
(# 1918)



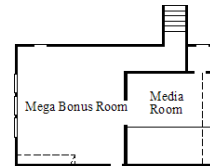
Optional Game Room with
Media Room and Bedroom 2 and 3
(# 1929)



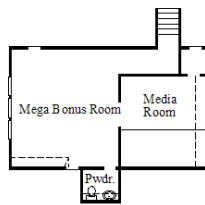
Optional Third Car Garage with
Bedroom 5 with Bath 4
(# 2011)



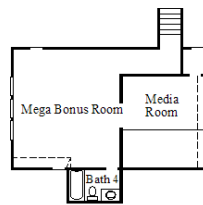
Optional Mega Bonus Room
with Bath 4
(# 2139)



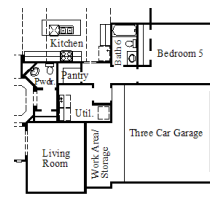
Optional Mega Bonus Room
with Media Room
(# 2140)



Optional Mega Bonus Room
with Media Room and Powder
(# 2141)



Optional Mega Bonus Room
with Media Room and Bath 4
(# 2142)

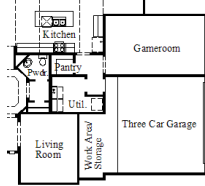


Optional Side Load Garage
with Bedroom 5 and Bath 6
(# 2207)

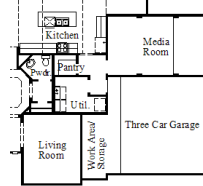


Disclaimers, Terms and Conditions of Use.

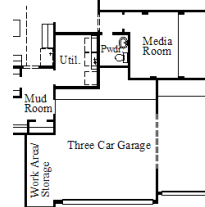
Plans, specifications, community amenities, standard features, availability and prices are subject to change without notice. Calculations for square footage of these plans were made from exterior dimensions less attached garage, if appropriate. A/C square footage is the same area less thickness of exterior walls of the same area. Square footage calculations are made based on plan dimensions only and may vary from finished square footage of the home as built. The accuracy of property tax rates, homeowners' association fees, and school district information displayed on this web site is not guaranteed by MHI or any affiliated companies. This information has been provided by third parties and is subject to change without notice. It is recommended that you ascertain the correct property tax rates, homeowners' association fees, and school district information from the appropriate authorities before you make a decision to purchase. © 2006 - 2012 Coventry Homes, All Rights Reserved. 2/7/2012



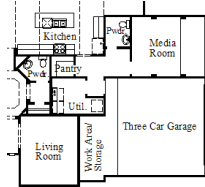
Optional Side Load Garage with Gameroom (# 2206)



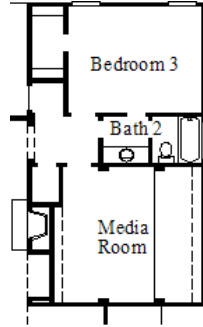
Optional Side Load Garage with Media Room (# 2209)



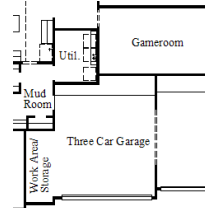
Optional Third Car Garage with Media Room and Powder (# 2210)



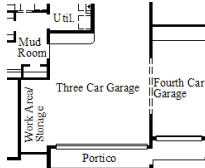
Optional Side Load Garage with Media Room and Powder (# 2213)



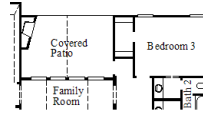
Optional Media Room (# 276)



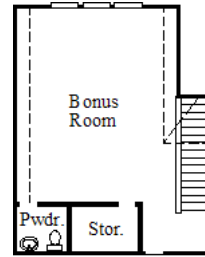
Optional Third Car Garage with Gameroom (# 288)



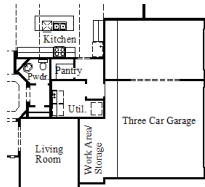
Optional Fourth Car Garage (# 441)



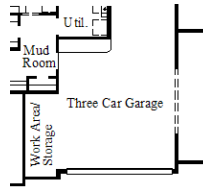
Optional Outdoor Fireplace (# 498)



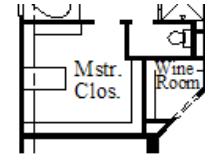
Optional Bonus Room with Powder (# 573)



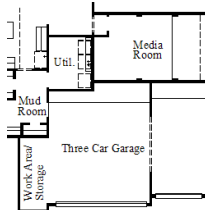
Optional Three Car Side Load Garage (# 623)



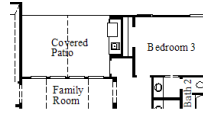
Optional 5' Garage Extension (# 750)



Optional Wine Room at Storage (# 776)



Optional Third Car Garage with Media Room (# 814)



Optional Outdoor Kitchen (# 970)



Disclaimers, Terms and Conditions of Use.

Plans, specifications, community amenities, standard features, availability and prices are subject to change without notice. Calculations for square footage of these plans were made from exterior dimensions less attached garage, if appropriate. A/C square footage is the same area less thickness of exterior walls of the same area. Square footage calculations are made based on plan dimensions only and may vary from finished square footage of the home as built. The accuracy of property tax rates, homeowners' association fees, and school district information displayed on this web site is not guaranteed by MHI or any affiliated companies. This information has been provided by third parties and is subject to change without notice. It is recommended that you ascertain the correct property tax rates, homeowners' association fees, and school district information from the appropriate authorities before you make a decision to purchase. © 2006 - 2012 Coventry Homes, All Rights Reserved. 2/7/2012