



Fulshear Creek Crossing

80' Homesites

From the \$260's

5503 Lake Hill Farm Way

Fulshear, TX 77441

Phone: (281)346-2701

Fax: (281)346-1685

Sales office hours:

Tues - Sat: 9 am - 6 pm

Sun - Mon: Noon - 6 pm



Logan Fuzetti

Driving Directions

From I-10 West:

Exit Pin Oak Rd.

& stay on Feeder Rd.,

Left on 1463 and travel 4.5 miles

Right on 1093 and travel 3 miles,

Left on Lake Hill Farm Way

From West Park Tollway:

Head West until it turns

into FM 1093,

Continue on FM 1093 to Fulshear;

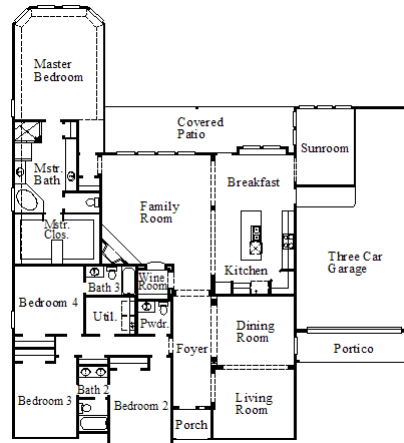
Go South/Left on Lake Hill Farm Way

(behind the Police Station/City Hall)

~Sq. Ft.: 3057
 Stories: 1.0
 Bedrooms: 4
 Master: Down

Baths (f/h): 3/1
 Garage: 3.0
 Price: \$311,990

8294 / Design 8294

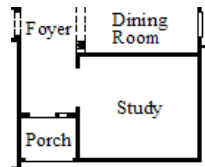


Available Elevations

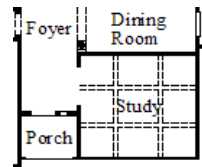


Elevation A

Available Options



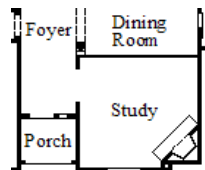
Optional Study (# 005)



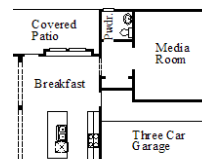
Optional Beamed Ceiling at Study (# 1045)



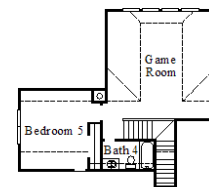
Optional Stone at Wine Room (# 1328)



Optional Fireplace at Study (# 1329)



Optional Media Room with Powder Room (# 276)

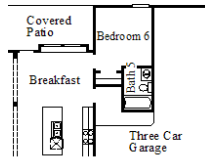


Optional Game Room, Bath 4 and Bedroom 5 (# 277)

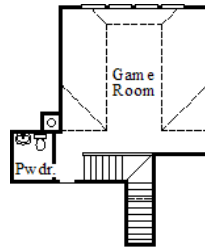


Disclaimers, Terms and Conditions of Use.

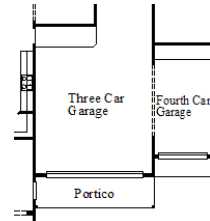
Plans, specifications, community amenities, standard features, availability and prices are subject to change without notice. Calculations for square footage of these plans were made from exterior dimensions less attached garage, if appropriate. A/C square footage is the same area less thickness of exterior walls of the same area. Square footage calculations are made based on plan dimensions only and may vary from finished square footage of the home as built. The accuracy of property tax rates, homeowners' association fees, and school district information displayed on this web site is not guaranteed by MHI or any affiliated companies. This information has been provided by third parties and is subject to change without notice. It is recommended that you ascertain the correct property tax rates, homeowners' association fees, and school district information from the appropriate authorities before you make a decision to purchase. © 2006 - 2012 Coventry Homes, All Rights Reserved. 2/7/2012



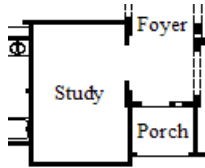
Optional
Bedroom 5 with Bath 6
(# 315)



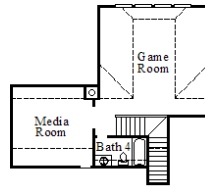
Optional
Game Room with Powder
(# 431)



Optional
Fourth Car Garage
(# 441)



Optional Study
at Bedroom 2
(# 565)



Optional Game Room,
Bath 4 and Media Room
(# 759)



Disclaimers, Terms and Conditions of Use.

Plans, specifications, community amenities, standard features, availability and prices are subject to change without notice. Calculations for square footage of these plans were made from exterior dimensions less attached garage, if appropriate. A/C square footage is the same area less thickness of exterior walls of the same area. Square footage calculations are made based on plan dimensions only and may vary from finished square footage of the home as built. The accuracy of property tax rates, homeowners' association fees, and school district information displayed on this web site is not guaranteed by MHI or any affiliated companies. This information has been provided by third parties and is subject to change without notice. It is recommended that you ascertain the correct property tax rates, homeowners' association fees, and school district information from the appropriate authorities before you make a decision to purchase. © 2006 - 2012 Coventry Homes, All Rights Reserved. 2/7/2012