



## Lakeshore

From the \$250's  
Houston, TX 77044  
Phone: (281)458-8069  
Fax: (281)458-4499

Sales office hours:  
**Plantation Homes in Lakeshore:**  
13207 Gentle Water Dr.,  
Houston, TX 77044



Mary Burkey



Jadrian Mitchell

### Driving Directions

**MODEL HOME IS CLOSED.**  
**PLEASE VISIT OUR**  
**PLANTATION MODEL HOME IN**  
**LAKESHORE**

**FOR MORE INFORMATION**  
**From US-59 North:**

Exit Beltway 8 Frontage Rd.,  
Travel East on Beltway 8 for 6 miles,  
Left on W. Lake Houston Pkwy.,  
Travel 4 miles,  
Left on Lakeshore Landing Dr.,  
Left on Grassy Shores Ln.,  
Left on Gentle Water Dr.

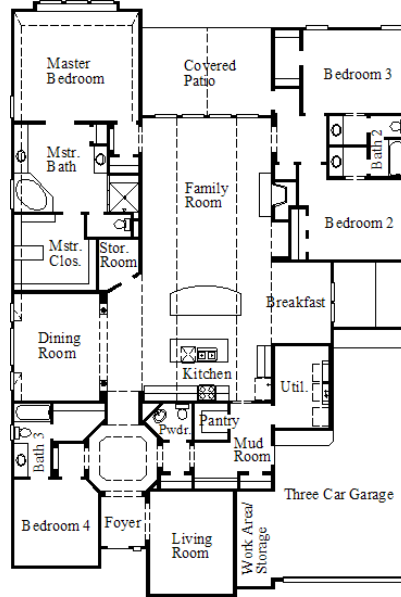
**From 1960 East:**

South on W. Lake Houston Pkwy for 3.2  
miles,  
Right on Lakeshore Landing,  
Left on Grassy Shores Ln.,  
Left on Gentle Water Dr.

~Sq. Ft.: 3256  
Stories: 1.0  
Bedrooms: 4  
Master: Down

Baths (f/h): 3/1  
Garage: 3.0  
Price: \$266,990

## 6859 / Design 6859



### Available Elevations



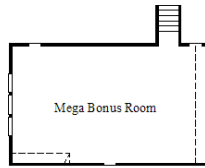
Elevation A

### Available Options

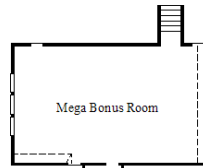


#### Disclaimers, Terms and Conditions of Use.

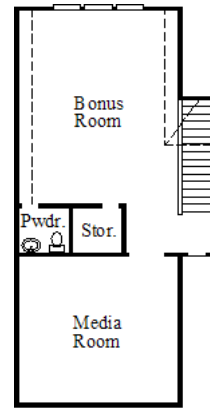
Plans, specifications, community amenities, standard features, availability and prices are subject to change without notice. Calculations for square footage of these plans were made from exterior dimensions less attached garage, if appropriate. A/C square footage is the same area less thickness of exterior walls of the same area. Square footage calculations are made based on plan dimensions only and may vary from finished square footage of the home as built. The accuracy of property tax rates, homeowners' association fees, and school district information displayed on this web site is not guaranteed by MHI or any affiliated companies. This information has been provided by third parties and is subject to change without notice. It is recommended that you ascertain the correct property tax rates, homeowners' association fees, and school district information from the appropriate authorities before you make a decision to purchase. © 2006 - 2012 Coventry Homes, All Rights Reserved. 2/4/2012



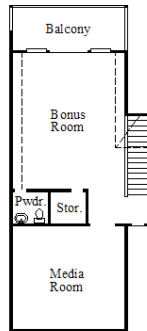
Optional  
Mega Bonus Room  
(# 1435)



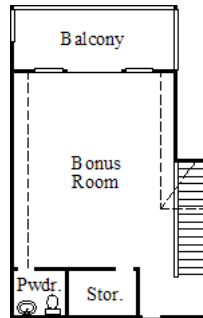
Optional Mega Bonus Room  
with Powder  
(# 1436)



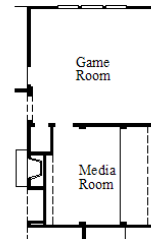
Optional Bonus Room with  
Powder and Media Room  
(# 1666)



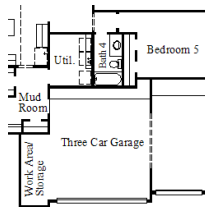
Optional Bonus Room with  
Powder and Media Room and Balcony  
(# 1917)



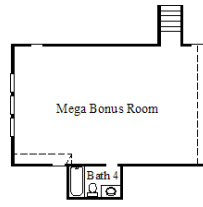
Optional Bonus Room with  
Powder and Balcony  
(# 1918)



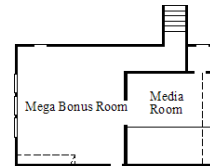
Optional Game Room with  
Media Room and Bedroom 2 and 3  
(# 1929)



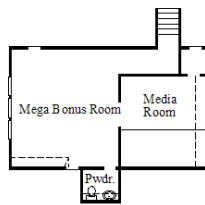
Optional Third Car Garage with  
Bedroom 5 with Bath 4  
(# 2011)



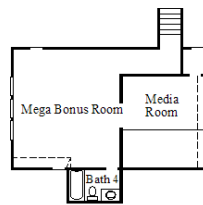
Optional Mega Bonus Room  
with Bath 4  
(# 2139)



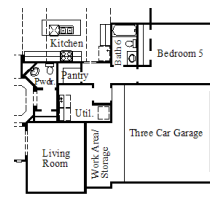
Optional Mega Bonus Room  
with Media Room  
(# 2140)



Optional Mega Bonus Room  
with Media Room and Powder  
(# 2141)



Optional Mega Bonus Room  
with Media Room and Bath 4  
(# 2142)

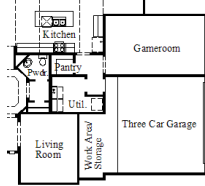


Optional Side Load Garage  
with Bedroom 5 and Bath 6  
(# 2207)

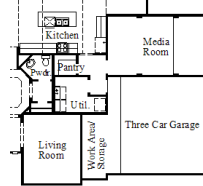


**Disclaimers, Terms and Conditions of Use.**

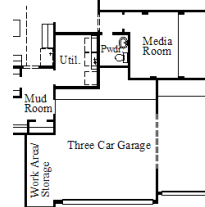
Plans, specifications, community amenities, standard features, availability and prices are subject to change without notice. Calculations for square footage of these plans were made from exterior dimensions less attached garage, if appropriate. A/C square footage is the same area less thickness of exterior walls of the same area. Square footage calculations are made based on plan dimensions only and may vary from finished square footage of the home as built. The accuracy of property tax rates, homeowners' association fees, and school district information displayed on this web site is not guaranteed by MHI or any affiliated companies. This information has been provided by third parties and is subject to change without notice. It is recommended that you ascertain the correct property tax rates, homeowners' association fees, and school district information from the appropriate authorities before you make a decision to purchase. © 2006 - 2012 Coventry Homes, All Rights Reserved. 2/4/2012



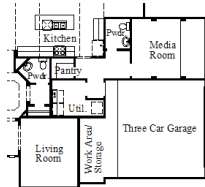
Optional Side Load Garage with Gameroom (# 2206)



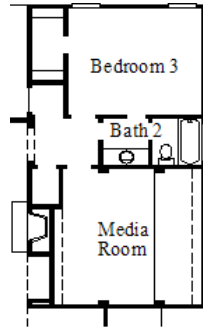
Optional Side Load Garage with Media Room (# 2209)



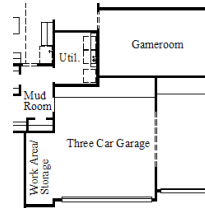
Optional Third Car Garage with Media Room and Powder (# 2210)



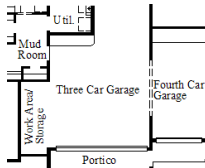
Optional Side Load Garage with Media Room and Powder (# 2213)



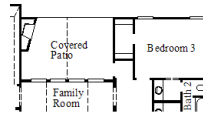
Optional Media Room (# 276)



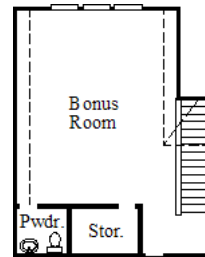
Optional Third Car Garage with Gameroom (# 288)



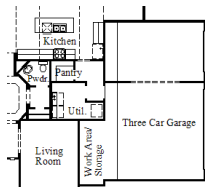
Optional Fourth Car Garage (# 441)



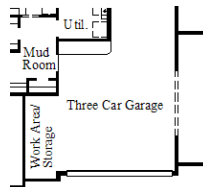
Optional Outdoor Fireplace (# 498)



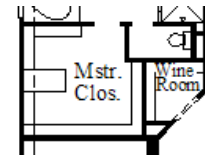
Optional Bonus Room with Powder (# 573)



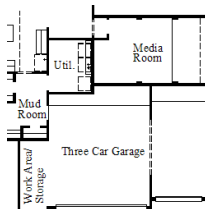
Optional Three Car Side Load Garage (# 623)



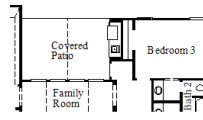
Optional 5' Garage Extension (# 750)



Optional Wine Room at Storage (# 776)



Optional Third Car Garage with Media Room (# 814)



Optional Outdoor Kitchen (# 970)



**Disclaimers, Terms and Conditions of Use.**

Plans, specifications, community amenities, standard features, availability and prices are subject to change without notice. Calculations for square footage of these plans were made from exterior dimensions less attached garage, if appropriate. A/C square footage is the same area less thickness of exterior walls of the same area. Square footage calculations are made based on plan dimensions only and may vary from finished square footage of the home as built. The accuracy of property tax rates, homeowners' association fees, and school district information displayed on this web site is not guaranteed by MHI or any affiliated companies. This information has been provided by third parties and is subject to change without notice. It is recommended that you ascertain the correct property tax rates, homeowners' association fees, and school district information from the appropriate authorities before you make a decision to purchase. © 2006 - 2012 Coventry Homes, All Rights Reserved. 2/4/2012