



Towne Lake

80' Homesites

From the \$330's

18903 San Saba Creek Cr
Cypress, TX 77433

Phone: (281)304-0911

Fax: (281)304-0611

Sales office hours:

Tues - Sat: 9 am - 6 pm

Sun - Mon: Noon - 6 pm



Rafael Castillo
Hablo Espanol



Jeanne Mahoney

Driving Directions

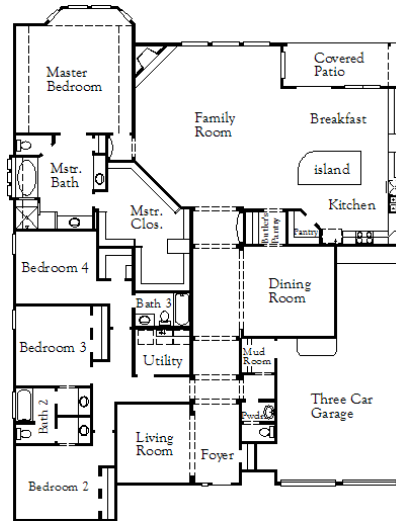
From US 290:

Left on Barker Cypress Rd.,
Right on Tuckerton,
Left on E. Hamilton,
Left on San Saba Creek

~Sq. Ft.: 3450
Stories: 1.0
Bedrooms: 4
Master: Down

Baths (f/h): 3/1
Garage: 3.0
Price: \$363,990

7293 / Design 7293



Available Elevations



Elevation A



Elevation B



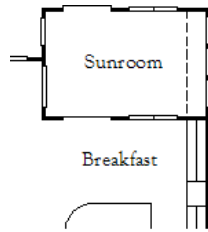
Elevation C

Available Options

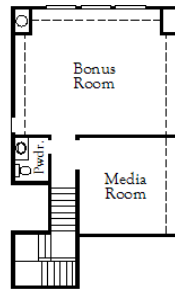


Disclaimers, Terms and Conditions of Use.

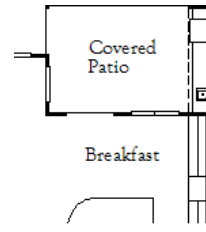
Plans, specifications, community amenities, standard features, availability and prices are subject to change without notice. Calculations for square footage of these plans were made from exterior dimensions less attached garage, if appropriate. A/C square footage is the same area less thickness of exterior walls of the same area. Square footage calculations are made based on plan dimensions only and may vary from finished square footage of the home as built. The accuracy of property tax rates, homeowners' association fees, and school district information displayed on this web site is not guaranteed by MHI or any affiliated companies. This information has been provided by third parties and is subject to change without notice. It is recommended that you ascertain the correct property tax rates, homeowners' association fees, and school district information from the appropriate authorities before you make a decision to purchase. © 2006 - 2012 Coventry Homes, All Rights Reserved. 2/7/2012



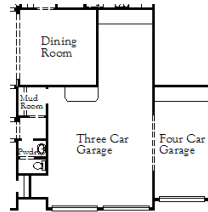
Optional Sunroom (# 107)



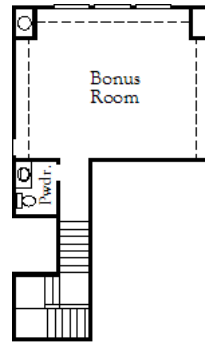
Optional Bonus Room with Media Room and Powder Room (# 1666)



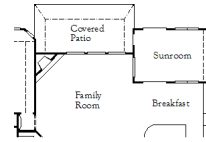
Optional Extended Patio with Outdoor Kitchen (# 1766)



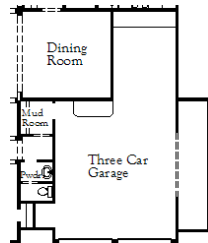
Optional Fourth Car Garage (# 405)



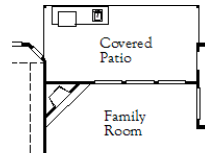
Optional Bonus Room with Powder Room (# 573)



Optional Sunroom with Covered Patio (# 616)



Optional 5' Garage Extension (# 750)



Optional Outdoor Kitchen (# 970)



Disclaimers, Terms and Conditions of Use.

Plans, specifications, community amenities, standard features, availability and prices are subject to change without notice. Calculations for square footage of these plans were made from exterior dimensions less attached garage, if appropriate. A/C square footage is the same area less thickness of exterior walls of the same area. Square footage calculations are made based on plan dimensions only and may vary from finished square footage of the home as built. The accuracy of property tax rates, homeowners' association fees, and school district information displayed on this web site is not guaranteed by MHI or any affiliated companies. This information has been provided by third parties and is subject to change without notice. It is recommended that you ascertain the correct property tax rates, homeowners' association fees, and school district information from the appropriate authorities before you make a decision to purchase. © 2006 - 2012 Coventry Homes, All Rights Reserved. 2/7/2012