



Tuscan Lakes

From the \$290's

League City, TX 77573

Phone: (832)309-9296

Fax: (713)974-2875

Sales office hours:

Model Closed - Special Incentives on Remaining Homes - Call for Appointment to View



Keri Claybourn



Chris Frederking

Driving Directions

MODEL CLOSED - Special Incentives

on

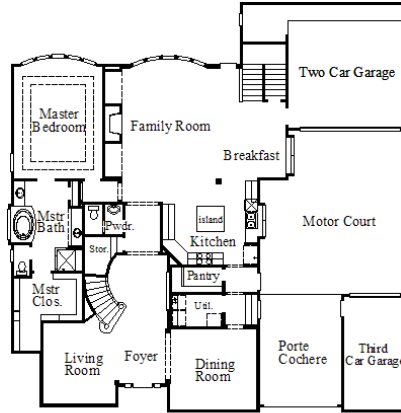
Remaining Homesites - Call for

Details

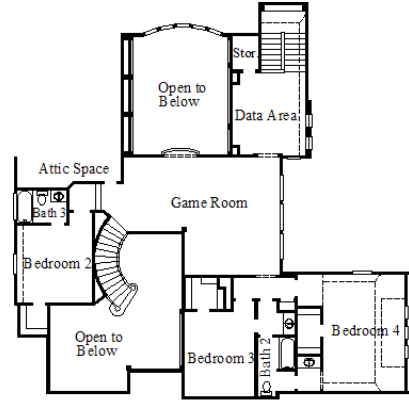
~Sq. Ft.: 4028
 Stories: 2.0
 Bedrooms: 4
 Master: Down

Baths (f/h): 3/1
 Garage: 3.0
 Price: \$378,990

7786 / Design 7786



First Floor



Second Floor

Available Elevations



Elevation B



Elevation D



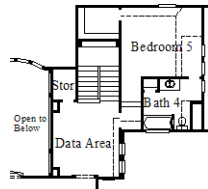
Elevation E

Available Options

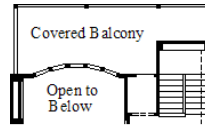


Disclaimers, Terms and Conditions of Use.

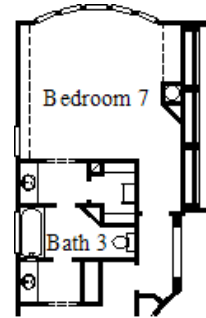
Plans, specifications, community amenities, standard features, availability and prices are subject to change without notice. Calculations for square footage of these plans were made from exterior dimensions less attached garage, if appropriate. A/C square footage is the same area less thickness of exterior walls of the same area. Square footage calculations are made based on plan dimensions only and may vary from finished square footage of the home as built. The accuracy of property tax rates, homeowners' association fees, and school district information displayed on this web site is not guaranteed by MHI or any affiliated companies. This information has been provided by third parties and is subject to change without notice. It is recommended that you ascertain the correct property tax rates, homeowners' association fees, and school district information from the appropriate authorities before you make a decision to purchase. © 2006 - 2012 Coventry Homes, All Rights Reserved. 5/21/2012



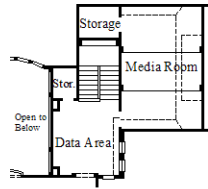
Optional
Bedroom 5 with Bath 4
(# 046)



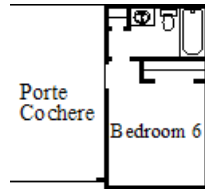
Optional
Covered Balcony
(# 162)



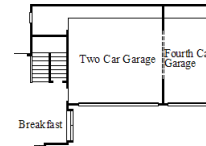
Optional
Bedroom 7
(# 256)



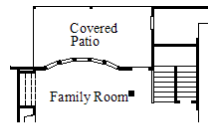
Optional
Media Room
(# 276)



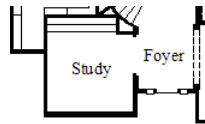
Optional Bedroom 6
with Bath 5
(# 316)



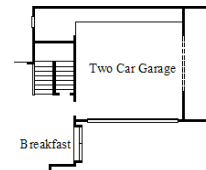
Optional
Fourth Car Garage
(# 406)



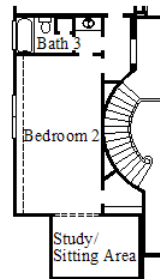
Optional
Covered Patio
(# 621)



Optional Study
at First Floor
(# 693)



Optional
5' Garage Extension
(# 750)



Optional Study/Sitting Area
at Second Floor
(# 693)

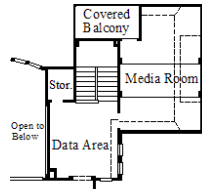


Disclaimers, Terms and Conditions of Use.

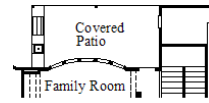
Plans, specifications, community amenities, standard features, availability and prices are subject to change without notice. Calculations for square footage of these plans were made from exterior dimensions less attached garage, if appropriate. A/C square footage is the same area less thickness of exterior walls of the same area. Square footage calculations are made based on plan dimensions only and may vary from finished square footage of the home as built. The accuracy of property tax rates, homeowners' association fees, and school district information displayed on this web site is not guaranteed by MHI or any affiliated companies. This information has been provided by third parties and is subject to change without notice. It is recommended that you ascertain the correct property tax rates, homeowners' association fees, and school district information from the appropriate authorities before you make a decision to purchase. © 2006 - 2012 Coventry Homes, All Rights Reserved. 5/21/2012



Optional
Wine Room
(# 776)



Optional Media Room
with Covered Balcony
(# 828)



Optional Covered Patio
with Outdoor Kitchen
(# 970)



Disclaimers, Terms and Conditions of Use.

Plans, specifications, community amenities, standard features, availability and prices are subject to change without notice. Calculations for square footage of these plans were made from exterior dimensions less attached garage, if appropriate. A/C square footage is the same area less thickness of exterior walls of the same area. Square footage calculations are made based on plan dimensions only and may vary from finished square footage of the home as built. The accuracy of property tax rates, homeowners' association fees, and school district information displayed on this web site is not guaranteed by MHI or any affiliated companies. This information has been provided by third parties and is subject to change without notice. It is recommended that you ascertain the correct property tax rates, homeowners' association fees, and school district information from the appropriate authorities before you make a decision to purchase. © 2006 - 2012 Coventry Homes, All Rights Reserved. 5/21/2012